

## Spark™ Display Mailer With Inside Decoration (4.5" x 4.75" x 1.25")

PKGBX07P

Outside Decoration

**Final outside product size is approximately:** 4.5"W x 4.75"D x 1.25"H

(sizes vary slightly based on assembly)

**Safe Area: Top Lid/Bottom-** 4.2"W x 4.1"H

**Sides-** 4.2"W x 1.1"H

**Inside Front Flap-** 4.2"W x 1"H

**Closure Style:** Straight Tuck End with Dust Flaps

### Important Product Notices

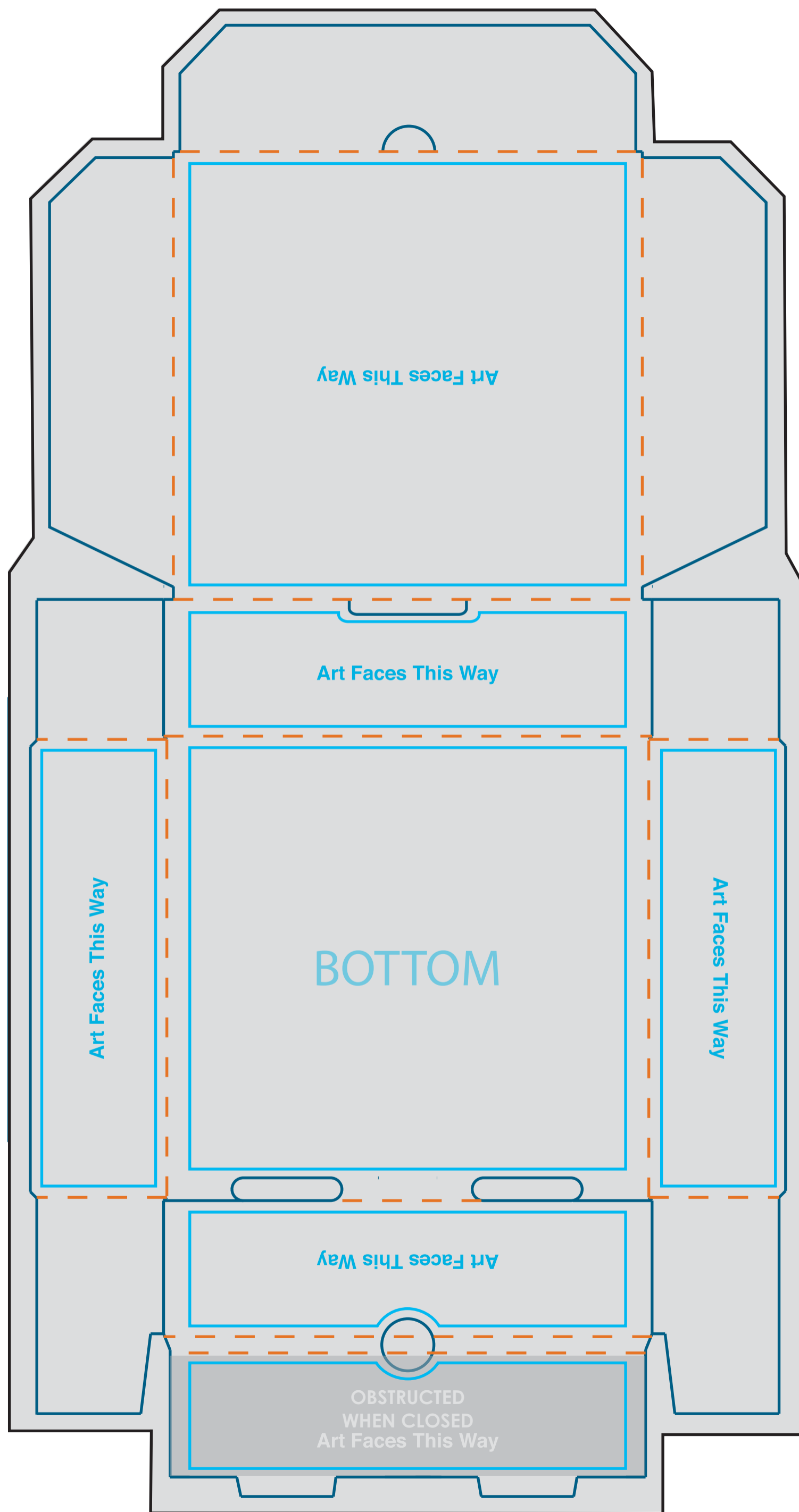
Keep text and important image views within the safe area. Text and images outside of the safe area are likely to get bent over or trimmed off during production.

**Supplied Artwork:** Submit print ready artwork at 100% print size. Accepted file types are PDF, PSD, JPG, PNG. All placed images MUST be at least 300dpi and embedded. All text must be outlined. File should be under 15mb.

Font sizes less than 10pt may not print legibly.

**Art files must be saved at size:** 7.78"W x 14.71"H

- BLEED AREA
- TRIM LINE
- SAFE AREA
- - - FOLD LINE
- OBSTRUCTION



## Spark™ Display Mailer with Inside Decoration (4.5" x 4.75" x 1.25")

PKGBX07p

Inside Decoration

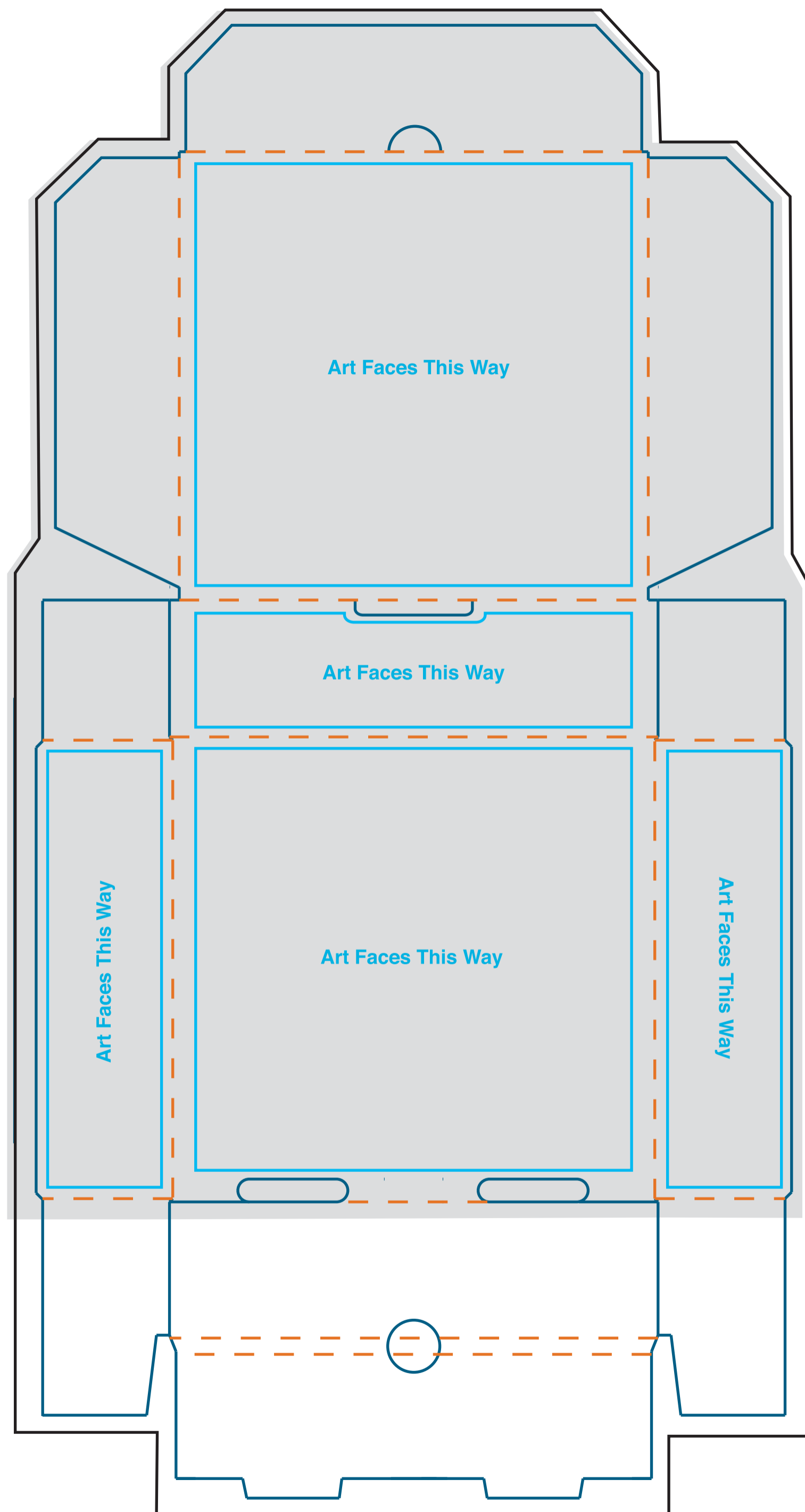
**Final outside product size is approximately:** 4.5"W x 4.75"D x 1.25"H

(sizes vary slightly based on assembly)

**Safe Area: Top Lid/Bottom-** 4.2"W x 4.1"H

**Sides-** 4.2"W x 1.1"H

**Closure Style:** Straight Tuck End with Dust Flaps



### Important Product Notices

Keep text and important image views within the safe area. Text and images outside of the safe area are likely to get bent over or trimmed off during production.

**Supplied Artwork:** Submit print ready artwork at 100% print size. Accepted file types are PDF, PSD, JPG, PNG. All placed images MUST be at least 300dpi and embedded. All text must be outlined. File should be under 15mb.

Font sizes less than 10pt may not print legibly.

**Art files must be saved at size:** 7.78"W x 11.82"H

- BLEED AREA
- TRIM LINE
- SAFE AREA
- - - FOLD LINE
- OBSTRUCTION