



# Spark™ Display Mailer with Inside Decoration (9"x6"x4")

PKGBX04P

Outside Decoration

**Final outside product size is approximately:** 9.5"W x 6.19"D x 4.13"H

(sizes vary slightly based on assembly)

**Final Inside product size is approximately:** 9"W x 6"D x 4"H

**Safe Area: Top Lid/Bottom-** 8.44"W x 5.49"H

**Front Lid Flap/Back/Front-** 8.91"W x 3.55"H

**Lid Sides-** 5"W x 2.43"H

**Base Sides-** 5.49"W x 3.38"H

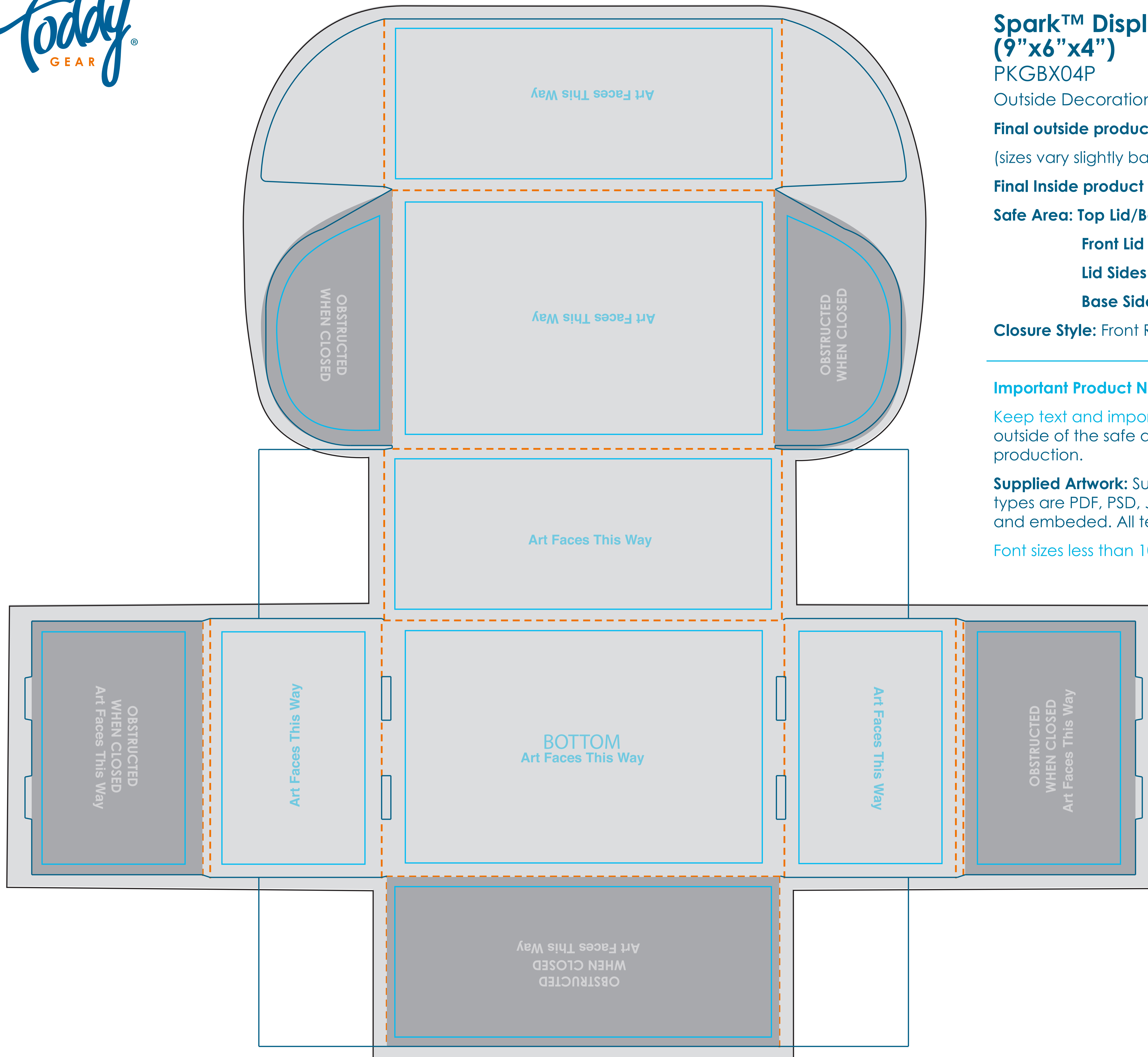
**Closure Style:** Front Roll Tuck

## Important Product Notices

Keep text and important image views within the safe area. Text and images outside of the safe area are likely to get bent over or trimmed off during production.

**Supplied Artwork:** Submit print ready artwork at 100% print size. Accepted file types are PDF, PSD, JPG, PNG. All placed images MUST be at least 300dpi and embedded. All text must be outlined. File should be under 15mb.

Font sizes less than 10pt may not print legibly.



- BLEED AREA
- TRIM LINE
- SAFE AREA
- - - FOLD LINE
- OBSTRUCTION





# Spark™ Display Mailer with Inside Decoration (9"x6"x4")

PKGBX04P

Inside Decoration

**Final outside product size is approximately:** 9.5"W x 6.19"D x 4.13"H

(sizes vary slightly based on assembly)

**Final Inside product size is approximately:** 9"W x 6"D x 4"H

**Safe Area: Top Lid/Bottom-** 8.44"W x 5.49"H

**Lid/Back/Front Sides-** 8.91"W x 3.55"H

**Lid Sides-** 5"W x 2.43"H

**Closure Style:** Front Roll Tuck

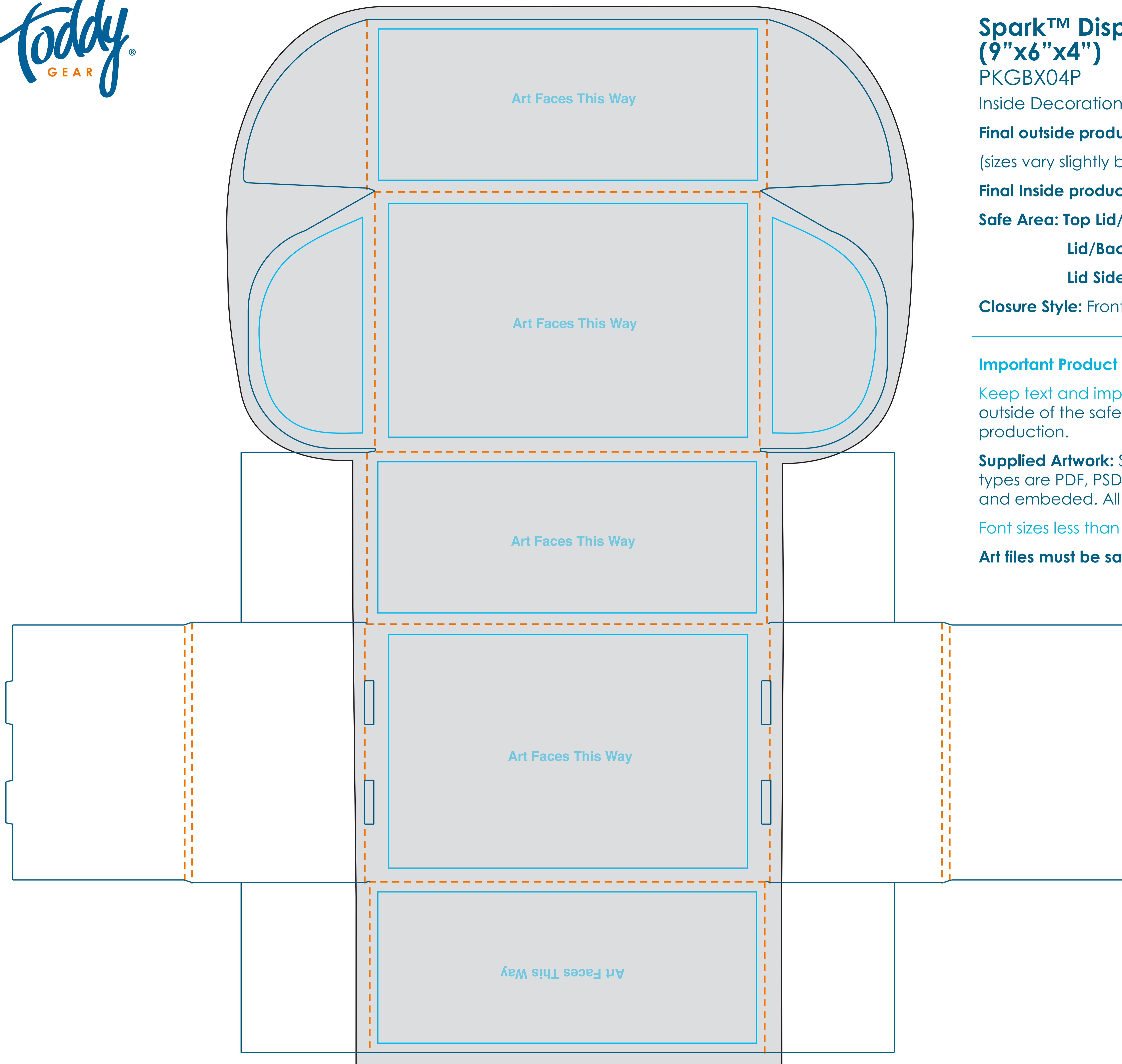
## Important Product Notices

Keep text and important image views within the safe area. Text and images outside of the safe area are likely to get bent over or trimmed off during production.

**Supplied Artwork:** Submit print ready artwork at 100% print size. Accepted file types are PDF, PSD, JPG, PNG. All placed images MUST be at least 300dpi and embedded. All text must be outlined. File should be under 15mb.

Font sizes less than 10pt may not print legibly.

**Art files must be saved at size:** 16.15"W x 24.96"H



- BLEED AREA
- TRIM LINE
- SAFE AREA
- - - FOLD LINE
- OBSTRUCTION

